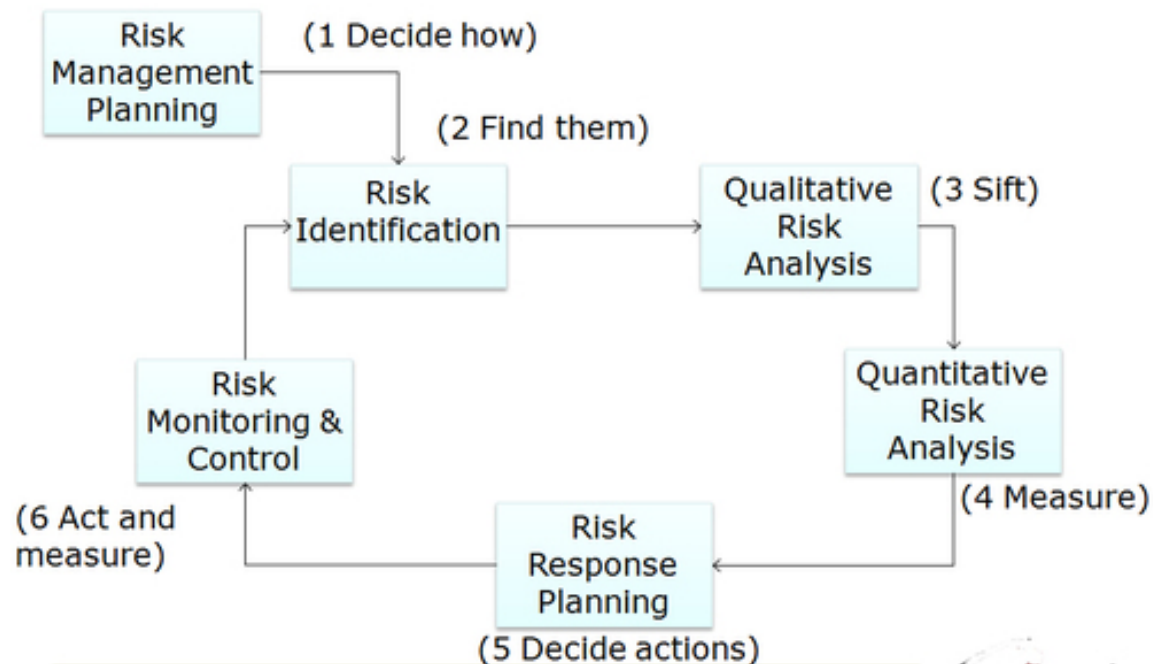


# THE RMP PROCESS



The preparation of your RMP will begin by applying the RMP process. A process is a repeatable sequence of predictable actions that change a known undesirable condition to a predictable, hopefully more desirable condition.

That a process is applied to a *known* condition suggests that the situation has been analyzed and that it has been accurately established that **the condition does exist to which the process can appropriately be applied.**

That a process is *predictable* suggests that, regardless of the initial conditions and execution details, **every possible outcome has been anticipated.** This means that there is someone who understands the risks of each activity and who is prepared to recognize those risks during execution and initiate the appropriate action.

That a process is a *sequence* offers that one action follows another. From this observation a number of consequences surface that **often are overlooked and that can significantly reduce the likelihood of process success.** First, the order of the activities within the process must be known. Secondly, there must be criteria for starting an activity. Furthermore, there must be criteria for recognizing the completion of an activity. For this to take place, there must be someone responsible for knowing the activities, how they relate, and how to measure the criteria so that process control decisions can be made correctly.

That a process is *repeatable* signifies that it **defines a type of behavior that has been decided to be the appropriate response to a typical problem.** This means that those who have a particular responsibility within a process should be prepared to execute those responsibilities. This includes having adequate resources - people, materials, tools, and time - to execute in a fashion that fulfills their responsibilities.